

Creating a Sustainable World Through International Education

Holly Hudson, Assoc. Vice President for Global Engagement

Kelly Wellman, Sustainability Director

Ben Kalscheur, Sustainability Assistant Manager

Caleb Chapman, Asst. Director of Global Initiatives



UN INTERGOVERNMENTAL SCIENCE-POLICY PLATFORM



- **UN Global Assessment Report on Biodiversity & Ecosystem Services (2019)**
 - Most thorough Planetary Health Check ever
 - Report agreed by consensus across all UN Nations
 - 450 Scientists, 3 Years
 - 1M species on brink of extinction
 - ~33% of marine species at risk
 - 1 in 10 insects at risk (conservative estimate)
 - Wetlands, rainforests, & coral reefs in massive decline
 - Decline in natural ecosystems by 47%
 - Wetlands have drained by 83% since the 1700's
 - Nature being destroyed 10-100X higher than the average over the past 10M years
 - Humans extract ~60B tons of resources annually
 - Almost double from 1980, while population has only risen 66%

UN INTERGOVERNMENTAL PANEL ON CLIMATE CHANGE (2023)

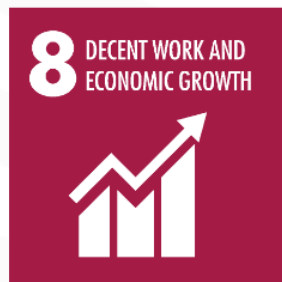


- IPCC AR6 Synthesis Report
 - 3/20/23
- Unequivocally, It is US
- We must Act Now
- "Our world needs climate action on all fronts -- everything, everywhere, all at once."
 - UN Secretary General - António Guterres





SUSTAINABLE DEVELOPMENT GOALS



<https://www.youtube.com/watch?v=RpqVmvMCmp0>

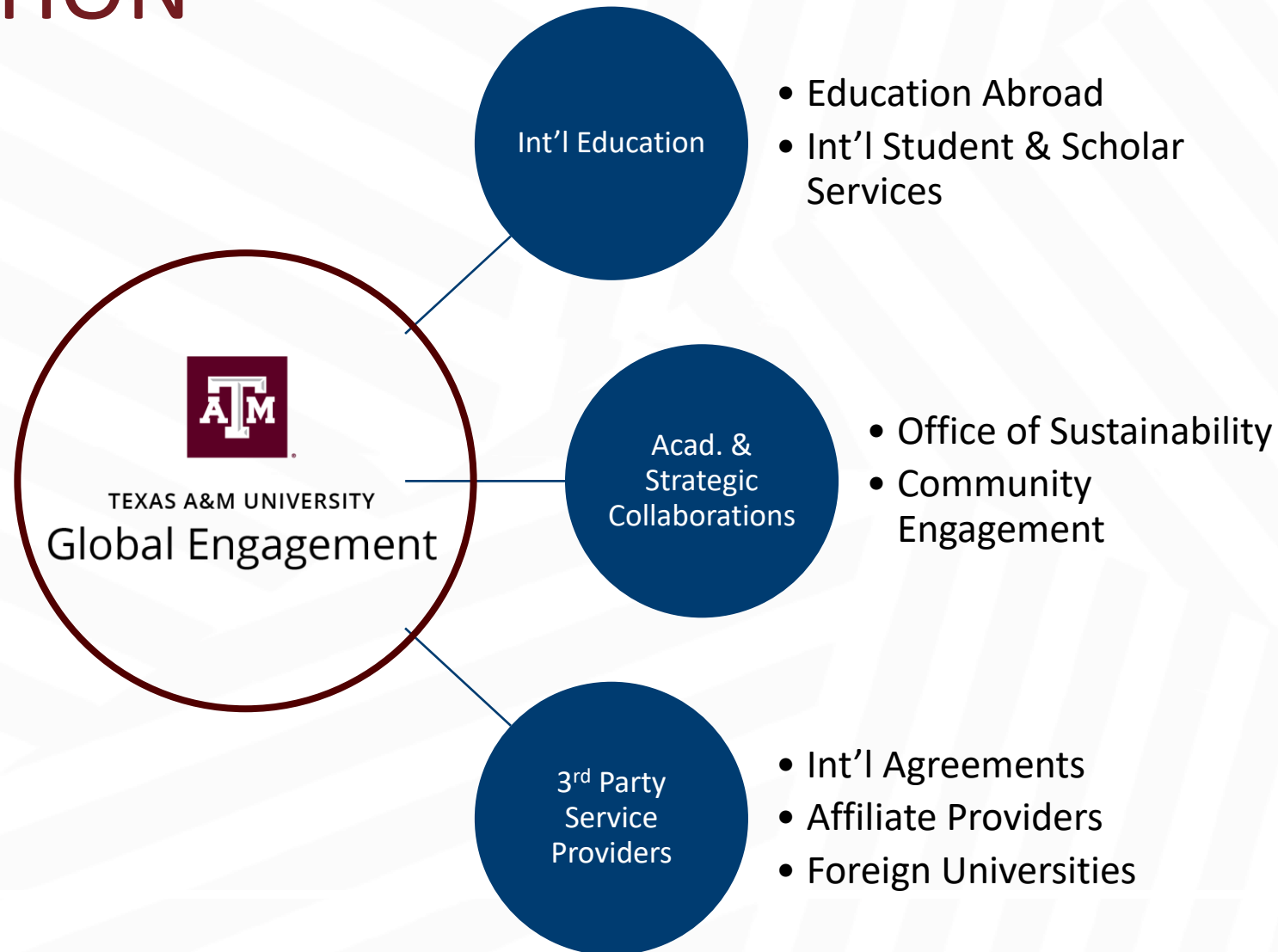
TOGETHER
we can



@sustainableTAMU



TOUCHPOINTS OF INTERNATIONAL EDUCATION





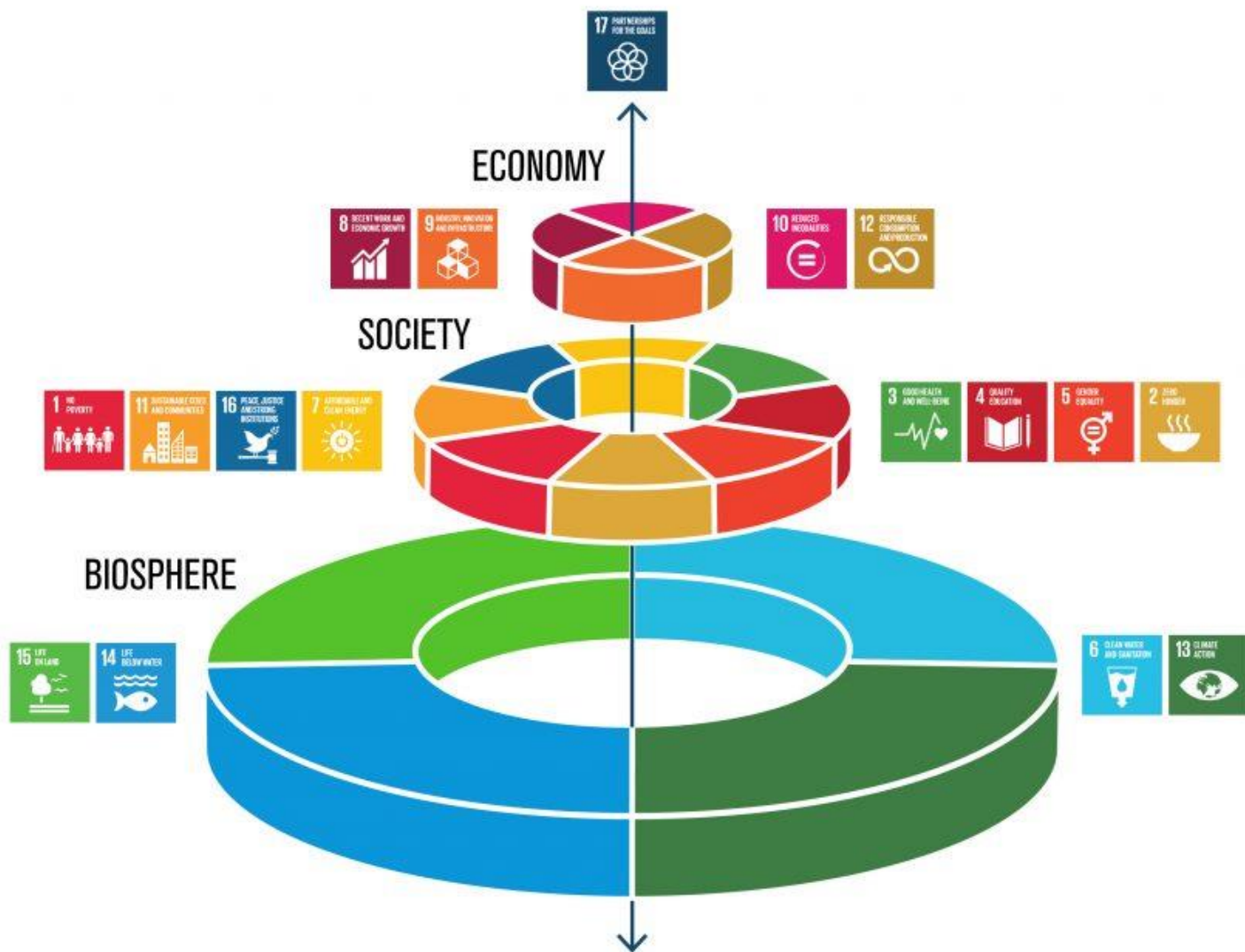
WHAT IS INTERNATIONAL EDUCATION?



International education advances learning and scholarship; builds understanding and respect among different peoples; and enhances constructive leadership in the global community.

Source: NAFSA

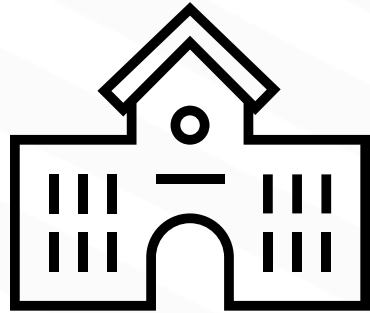
WHAT GUIDES US?



"We believe we have the responsibility to actively inform and engage the field of education abroad in a way that fosters inclusion, promotes equity, and combats structural racism systemically and sustainably."

Source: The Forum on Education Abroad Foundational Principles

IMPACTS OF INTERNATIONAL EDUCATION



**Unique challenge for
institutions of higher education**

Advantages

- High-impact learning experience
- Great recruitment tool for the institution

Disadvantages

- Disproportionate participation
- Large carbon footprint, drain on host country's resources

The Carbon Cost of Transportation

What's the lowest-carbon method of transportation? Here's the carbon footprint of travel for different vehicles, measured in grams of carbon dioxide equivalents per passenger-kilometer.

● Air Travel ● Private Transport ● Public Transport



Short-Haul
i.e. within a country or a European country

Medium-Haul
i.e. within U.S., or flight between two European countries

Long-Haul
More than 2,300 miles

Gasoline
Two passenger

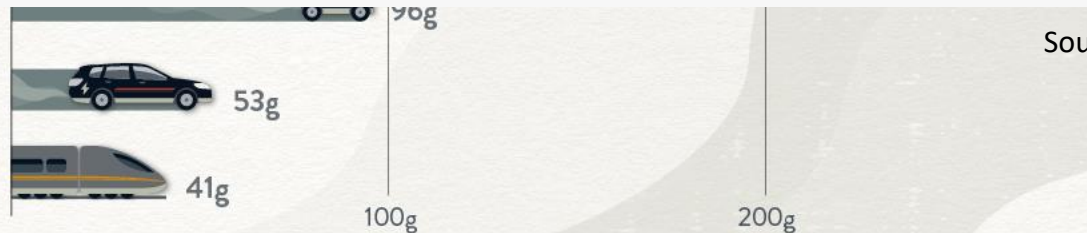
Electric Vehicle
Medium

National Rail

2018–2019 Approximate Carbon Footprint of Flights To and From UW–Madison Study Abroad Programs

- 2,592 Students
- 25,512,114 Passenger Air Miles Traveled
- 11,208.91 Metric Tons of Carbon Dioxide Equivalent (MTCDE) Produced
- ~4.3 Metric Tons – Average Student's Carbon Footprint Due to Air Travel

Source: <https://studyabroad.wisc.edu/handbook/handbook-sustainability/>



Source: UK Department for Business, Energy & Industrial Strategy via Our World in Data
Flight labels have been adjusted to be more relevant to an international audience, from the original UK-based source.



INTERNATIONAL EDUCATION'S LINK TO THE SDGs

Social Equity (people)

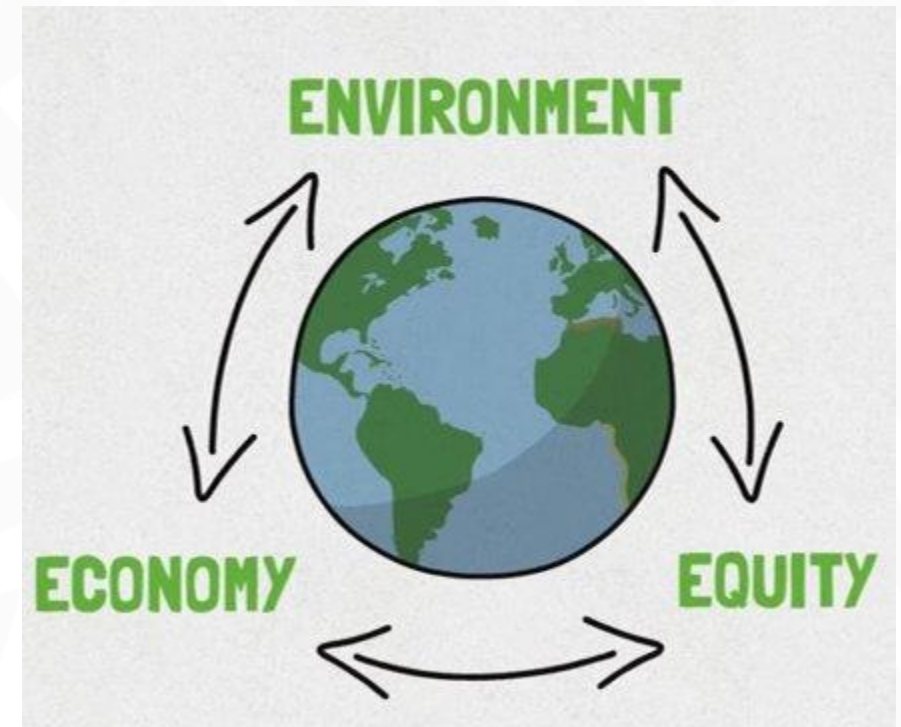
- By providing quality, high-impact experiences for all students

Economy (prosperity)

- By increasing participation by underrepresented student populations

Environment (planet)

- By offsetting and neutralizing carbon emissions



THE IMPORTANCE OF PARTNERSHIP



get:

- Education and resources
- Administrative operations and program development
- Curriculum auditing
- Grant funding

Sustainability partners get:

- Advocates for the mission
- Wider awareness of sustainability
- Long-term impacts on sustainability attitudes and behaviors
- Advancement of key performance indicators

SOLUTION THROUGH PARTNERSHIP



- Sustainability strategic plan for international education at Texas A&M
- 17-member team representing Global Engagement, Sustainability, Education Abroad, and International Student & Scholar Services.

To foster change and create a culture of sustainability within Global Engagement.



SOLUTION THROUGH PARTNERSHIP

Goals

- To align operations and functions with the UN's SDGs
- To develop sustainably-minded programs and services
- To provide opportunities for sustainable action
- To foster meaningful, action-driven partnerships
- To become a national leader in sustainable practices and results



SOLUTION THROUGH PARTNERSHIP

Desired results

- Equitable opportunities
- Education, awareness, and action
- Energy conservation
- Waste reduction
- Carbon emission offset





SOLUTION THROUGH PARTNERSHIP

How do we get there?

STEP 1: Guiding Principles

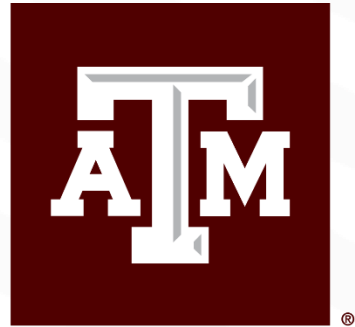
What is our sustainability commitment? What measurable outcomes do we hope to achieve?

STEP 2: Administrative Framework

What can we do operationally to become more sustainable? What partnerships and collaborations need to be fostered?

STEP 3: Student Learning & Development

How do we incorporate sustainability into our interactions with students? How do we encourage sustainable curriculum and practices within student abroad programs?



RESPECT. PROTECT. PRESERVE.



@sustainableTAMU



 **sustainability@tamu.edu**