

Transitioning to Renewables

How can we support each other?



Dallas County
Community College District

dccc.edu

Survey

Who already uses some renewable energy?

Who wants their institution to use 100% renewable energy?

Who already has a plan for how to get there?



Texas Energy Use

“Texas led the nation in energy consumption in 2015 (the most recent year data was available), maintaining a streak that we’ve boasted for the fifty-fifth year, since 1960.”

Texas Monthly

August 2, 2017



Dallas County
Community College District

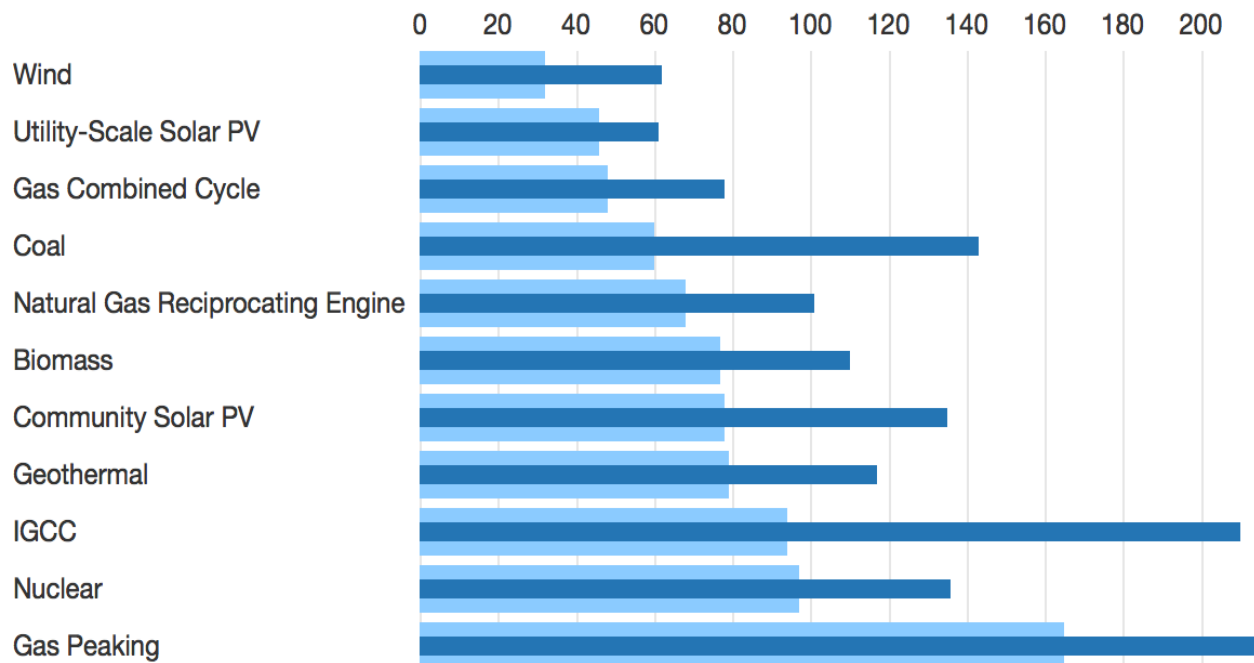
dccc.edu

Cost of renewables is plummeting

Source: Cleantechnica.com

US Unsubsidized Levelized Cost of Energy (Figures by Lazard)

Light blue = low estimate. Dark blue = high estimate. Figure = \$/MWh



Cost of renewables is plummeting

“The cost of renewable energy is now falling so fast that it should be a **consistently** cheaper source of electricity generation than traditional fossil fuels within just a few years, according to a new report from the International Renewable Energy Agency (IRENA).”

Forbes Magazine

Jan. 13, 2018



Dallas County
Community College District

dccc.edu

What if.....

- All state higher education institutions transitioned to 100% renewable energy within five years

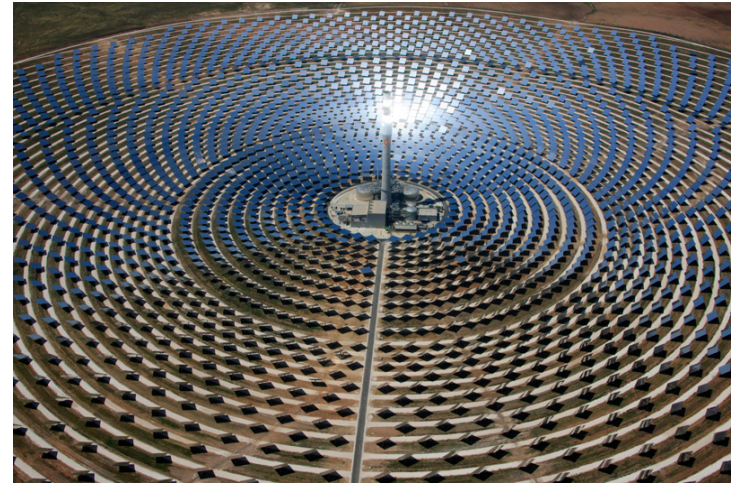


Do you have a strategic
plan for transitioning to
renewables at your
institution?



Renewable Energy Options

- Solar (Photovoltaic, Concentrated solar thermal)
 - On-site generation
 - Off-site generation
 - Power Purchase Agreements
 - Public Private Partnerships
 - Purchase (with or without RECS)
 - Aggregation?



Renewable Energy Options

- Wind
 - On-site generation; off-site generation; purchase
- Biomass
- Geothermal
- Hydropower
- Tidal power
- Wave power
- Wind power



Who is the decision-maker?

- Sustainability director
- Facilities director
- Purchasing director
- CFO
- Executive Team
- College President(s)
- CEO
- Board



How do you start the
conversation?



Dallas County
Community College District

dcccd.edu

What do your decision-makers need?

- Information
- Technical assistance
- Financial forecasts
- Other?

Where can they get it?



State Comptroller's Office of Statewide Procurement Contract

- With the assistance of the State Energy Conservation Office (SECO), they bid out a contract for Electricity Sourcing Service
- Bid was won by Texas Energy Aggregation (TEA) and Rocky Mountain Institute (RMI)
- Contract includes team of experts available to analyze opportunities at no cost or obligation



Texas Higher Education Renewable Energy Consortium

- Alamo Colleges
- Dallas County Community Colleges
- Texas A&M – College Station
- University of North Texas



Dallas County
Community College District

dccc.edu

Goals

- Higher education models the RE use promote through our sustainability programs (we can walk the talk);
- Reduce fossil fuel consumption quickly and dramatically;
- Help our board members feel more comfortable about the transition to renewables by showing them that many other institutions are doing the same



The Candidates

- AASHE/Edison Energy
- Second Nature/Customer First Renewables
- Texas Energy Aggregation/Rocky Mountain Institute



TEA/RMI chosen unanimously

- The state contract met all of our requirements
- The state contract does not require an RFP because the state has already issued the RFP
- Cost was transparent
- Contract includes no cost, no obligation strategic planning assistance
- Reputation/track record of both organizations
- Non-state institutions can participate also



THEREC to host Workshops

- Various locations around the state
- All stakeholders are invited to attend
- Messages targeted to stakeholders' concerns



TEA Session tomorrow

- Want to see TEA's presentation? Attend their session tomorrow



Questions?

Georgeann Elliott Moss

Executive Administrator -

Sustainability Outreach and Initiatives

gemoss@dcccd.edu

214-378-1823



Dallas County
Community College District

dcccd.edu