



Most Likely to Succeed

Tips for Students when
Developing Sustainability Initiative Proposals

Presented by
Sharon Miller Curry
Coordinator for Sustainability and Support Services
Trinity University

As a student, you join a community of scholars.

**The institution offers students
its expertise, knowledge, and experience.**

**Students bring a fresh perspective
and often serve as agents of change.**



**“student initiatives are
strong drivers
of campus change”**

8 TIPS FOR A MORE COMPREHENSIVE PLAN TO BUILD A FOUNDATION FOR SUCCESS

1 Understand how your proposal fits into the big picture

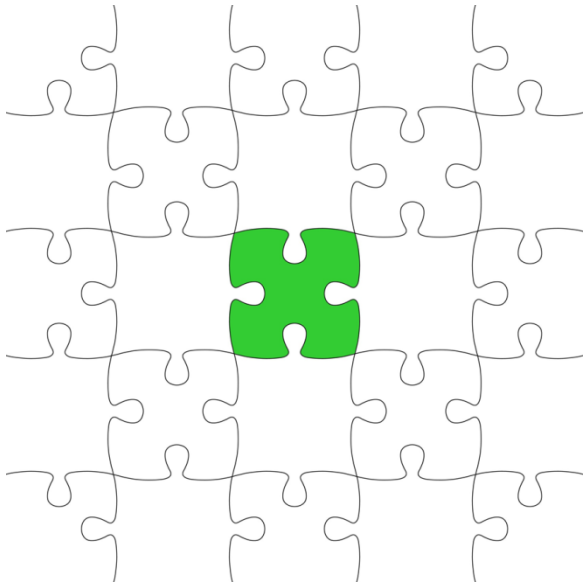


Does your campus have a strategic plan?



What are those objectives and foundations?

Make sure your proposal aligns with the vision, mission, and values of the institution.



8 TIPS FOR A MORE COMPREHENSIVE PLAN TO BUILD A FOUNDATION FOR SUCCESS

2 Remember the institution exists 24 hours a day, 7 days a week, 365 days a year

Make sure the plan
considers the entire year.

If the proposal is dependent
on students for
operation and maintenance,
what happens when
students are not available?



3

How will accountability be maintained?



Be sure to adhere to policies and procedures, including the institution's risk management.

Consider how you will pass on responsibility.

“even thoughtfully proposed projects often fail because of problems with maintaining student accountability and support”

4

Identify your champions

- Look for persons on campus willing to shepherd you through the process.
- Include those who support you in the proposal.
- Be sensitive to institutional politics.



5

Hit the trifecta!

Academics—Engagement—Operations



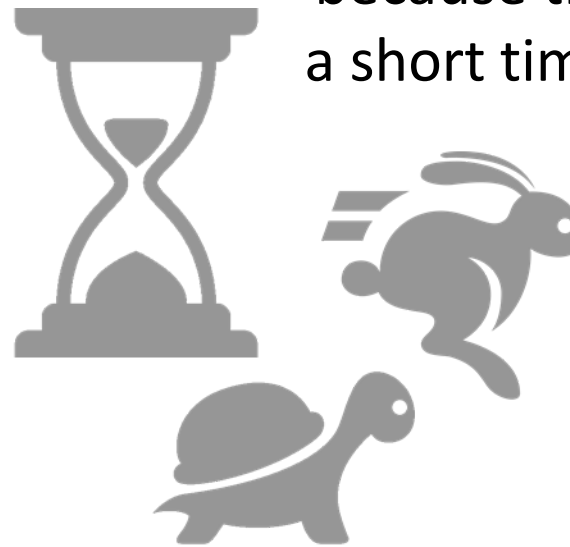
Proposals that address
these key areas
will resonate
with more of the
campus community.

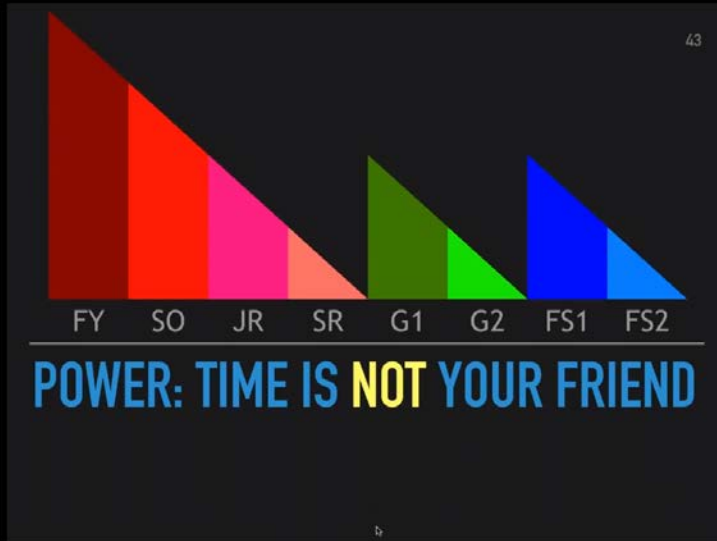
6

Be aware of varying perspectives on time

Students often want
the process
to move quickly
because they only have
a short time on campus.

It is not unusual for
institutional processes
to move slowly
over a number of years
... and budgets are
requested and approved
well in advance.





AASHE Webinar on February 21, 2018

Socially Sustainable: Living Wage Policies in American Higher Education

Presented by
Ken Weidner,
Assistant Professor
of Management
at Saint Joseph's
University

“a cynical
administrator
can run out
the clock”

Faculty & Staff

Memory & Reality

“operate as institutional memory
and can be a reality check
of what’s going on in the institution”

First Semester Students

Act

“still have seven more semesters”

Juniors & Seniors

Recruit

“focus less
on trying to make something happen”
“recruiting the continuity”



8 TIPS FOR A MORE COMPREHENSIVE PLAN TO BUILD A FOUNDATION FOR SUCCESS

7

Don't ignore the naysayers



NOT
POSSIBLE

I DON'T
THINK SO

Don't be discouraged by persons who are not supportive of the proposal, but **DO** listen to the reasons they have for not supporting the project.

It might help you identify something you've overlooked.

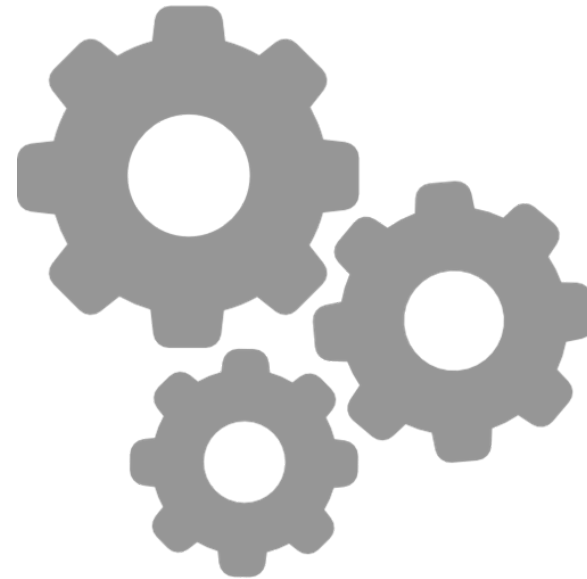
8 TIPS FOR A MORE COMPREHENSIVE PLAN TO BUILD A FOUNDATION FOR SUCCESS

8

Think through the lifecycle of a project

It is not just
design and implementation,
but also
operation and maintenance
to consider.

Don't forget the project
needs to be sustainable
... including what happens
at the end of life.



**“I want you to be able
to come back to campus
as alumni and say
‘I did that!’”**

Key Elements of the Proposal



Need/Objective

Solution

Benefits

Credibility/Success Stories

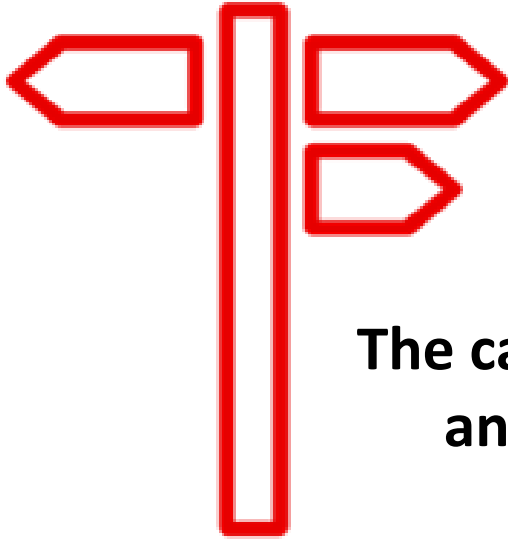
Deliverables

Implementation

Timeline

Operation and Maintenance

Costs (Labor and Materials)



CAMPUS STAKEHOLDERS TO CONSIDER INVOLVING WHEN DEVELOPING A PROPOSAL

**The campus is a community
and nothing happens
in isolation.**

**Talking to persons your proposal has the
potential to impact is a good way
to head off concerns that could delay
acceptance of the proposal.**

**Be alert to the possibility that
your proposal may impact areas
you did not anticipate.**

**This list is not meant to be
all-inclusive and will vary
from campus to campus.**

- Applicable Academic Departments
- Campus Planning Office
- Experiential Learning Office
- Facilities Services
- Residential Life Office
- Risk Management Office
- Student Government
- Student Sustainability-Related Organizations
- Student Involvement Office
- Sustainability Office



Thank you!

Sharon Miller Curry
Coordinator for Sustainability and Support Services
Office of Campus Planning and Sustainability
Trinity University
sharon.curry@trinity.edu
210-999-8463 office



TRINITY UNIVERSITY

SAN ANTONIO • 1869 • www.trinity.edu