

# Taking Stock/Getting Started

## Finding Opportunities to Take Action

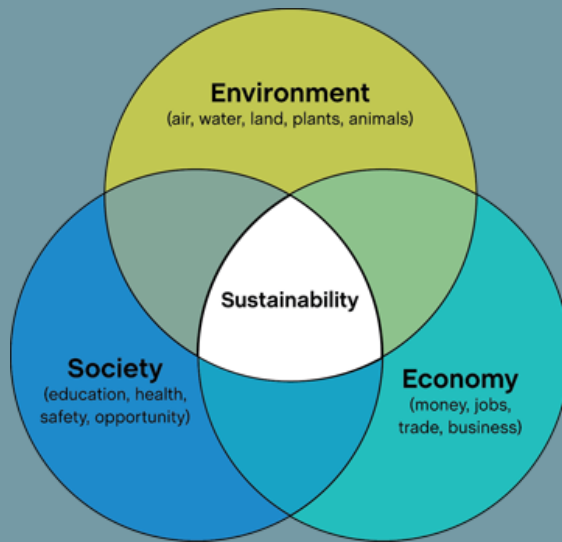
Laura Prange, Director  
Office of Campus Sustainability  
Texas A&M University-Kingsville

# Sustainability

The Brundtland Commission, 1983-87

*“Sustainable development is development that meets the needs of the present without compromising the ability of future generations to meet their own needs.”*

# Sustainability



# Sustainability

Social awareness  
Environment  
Economy

Campus community  
Campus operations  
Long term values

# **What you need to know as you get started**

Colleges and universities are conservative

Geographical location doesn't matter

Demographics may matter

Politics do matter

# **What you need to know as you get started**

Colleges and universities are image conscious

Colleges and universities are cost conscious

Colleges and universities listen to students

# **What you need to know as you get started**

**Students are drivers of change**

**Students are sensitive to moral/ethical issues**



# **What you need to know as you get started**

**There are many ways to approach campus  
sustainability**



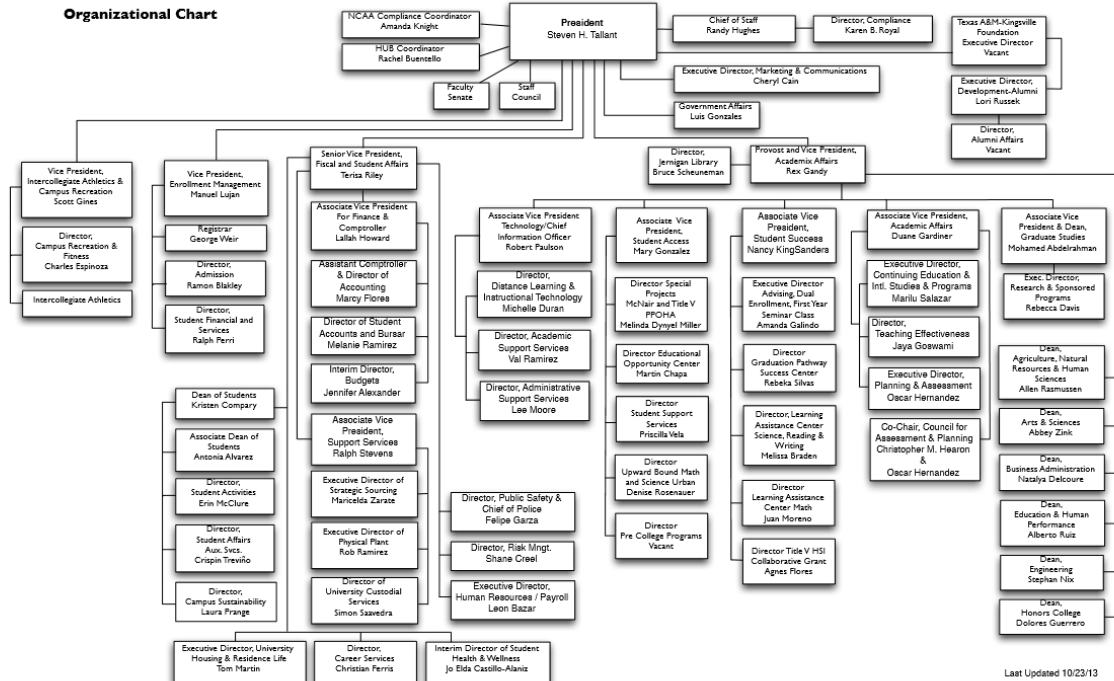
**What you need to know  
as you get started**

**It's all about people**

# Taking stock: Campus structure & the part each can play

## TEXAS A&M UNIVERSITY-KINGSVILLE

### Organizational Chart



Last Updated 10/23/13

# **Taking Stock:**

## **Major Divisions of a typical campus**

**Academics**

**Student Affairs**

**Athletics**

**Administration**

**Operations**

**Finance**

# **Taking Stock: Administration**

The President

The Provost

The Chief Financial Officer

The Chief of Facilities, Procurement

# **Taking Stock:**

## **Academics**

Provost  
Deans  
Chairs

Individual faculty  
Students  
Faculty Senate

# **Taking Stock:** **Student Affairs**

Student Government Association

Student organizations

Greek Life

International students

# **Taking Stock: Operations**

**At TAMUK:**

**Associate VP for Support Services**

**Executive Director of Facilities**



# **Taking Stock:**

## **Finance or sources of funding**

Environmental Service Fee  
Student referendums/petitions

# **Taking Stock:**

## **Advantages to look for**

Culture of collaborative decision-making

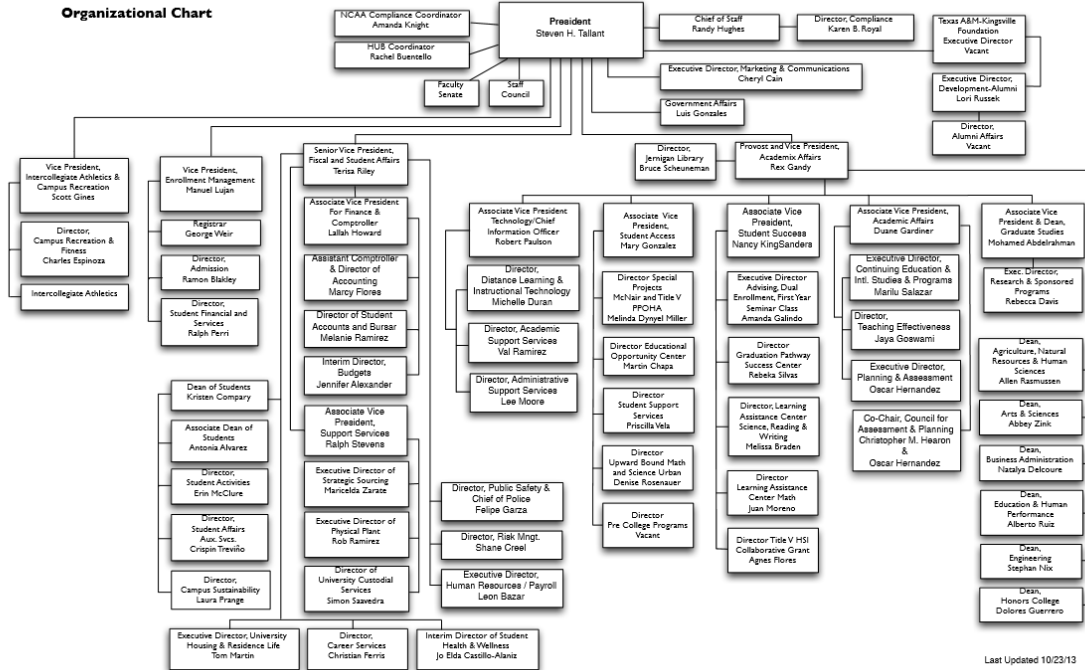
Generally progressive politics

Public declarations supporting sustainability

# Getting Started: Talk to people

## TEXAS A&M UNIVERSITY-KINGSVILLE

### Organizational Chart



Last Updated 10/23/13

# **Getting Started: What Do People Want?**

Use surveys, questionnaires and petitions  
Attend general meetings of faculty and staff

# **Getting Started:** **Form a committee**

Chaired by a campus leader/administrator  
Campus wide representation  
Diverse areas of expertise represented

# **Getting Started: Write a campus sustainability plan**

Academics

Student Affairs

Athletics

Administration

Operations

Finance

# **Getting Started: Write a campus sustainability plan**

**Include methods of measuring progress**



# Getting Started: **Academics**

Establish a Student Research Competition  
Establish an internship research program  
Establish a Faculty Forum

# Getting Started: **Student Affairs**

Partner with programs like SGA

Participate in their campus-wide events

# Getting Started: Operations

Recycling programs: a good place to start  
Energy management plan  
Water conservation

# **Getting Started:** **Awareness/education**

Work with marketing and communications

**Getting Started:**  
**Hire a full-time**  
**coordinator/director**

**Funding: the Environmental Service Fee**

# **Getting Started:** **Alternative ways to** **staff sustainability**

Form a coalition of staff who in cooperation address the spectrum of sustainability areas

# **Getting Started:** **Find a physical home**

Host meetings, forums, student groups  
Host receptions and social gatherings  
Model sustainability practices



# Resources

- Association for the Advancement of Sustainability In Higher Education (AASHE)
- Colleges and Universities Recycling Coalition (CURC)
- Re-Trac Connect

# Resources

- National Wildlife Federation Campus Ecology
- Arbor Day Foundation
- Environmental Defense Fund



**Facebook/JavelinaHabitat**

**<http://www.tamuk.edu/finance/facilities/sustainability/>**